

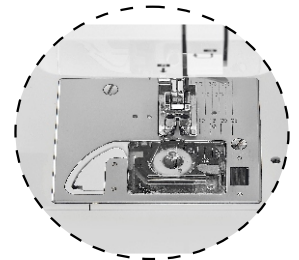
# Home Sewing Machine

## Model: CML-986

### Long Arm Computer Type

# SEWMASTER

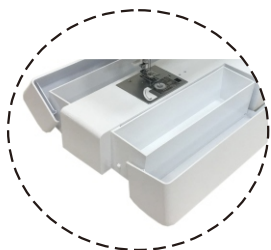
Flexibility of Sewing



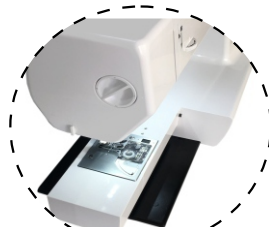
**DROP-IN BOBBIN**



**Electronic Functions**



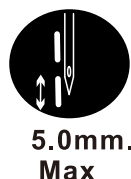
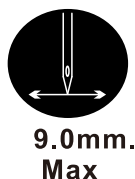
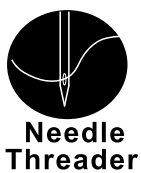
**Double A/C BOX**



**FREE ARM**



**DROP FEED**



Dimension of Machine: 64x24x31 cm

Dimension of Package: 77x36x46 cm

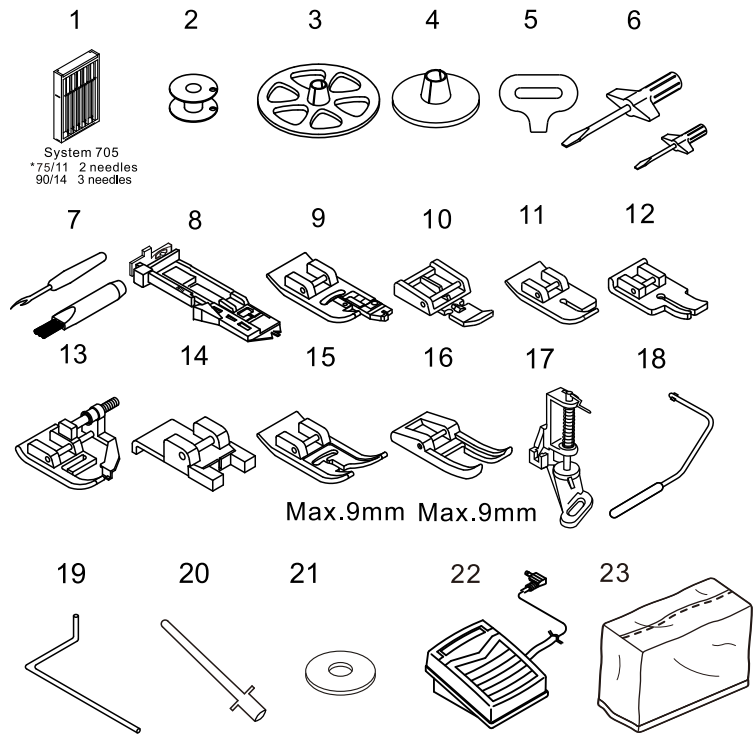
**N.W.: 12.5 KGS**

# Specification

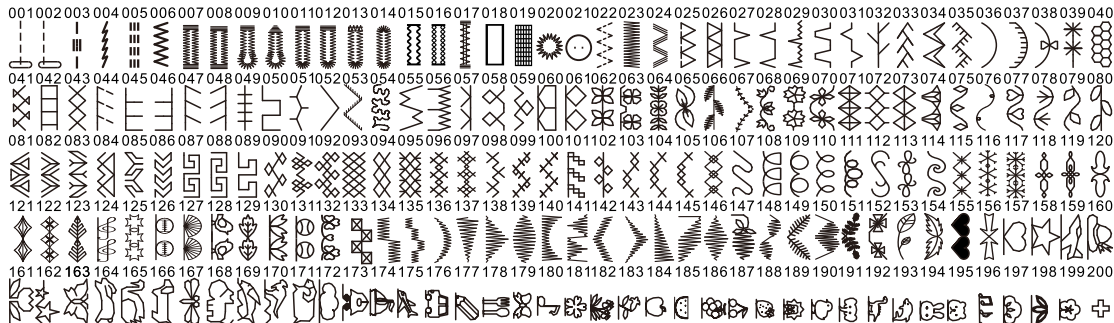
1a	Computerized selection of stitches	YES
2	Number of stitches	500 stitches
3	utility stitches	YES
4	stretching stitches	YES
5	decorative stitches	YES
6	Buttonhole	AUTO 11 PCS
7a	1 step button hole	YES
8	Alphabet	YES
9	Height of presser foot	2nd level- Max.10mm
10	Reverse Stitch Length	Max. 2.0mm
11a	length of stitch Dial	Max. 5.0mm
11b	width of stitch Dial	Max. 9.0mm
12	Tension regulate Dial	YES
13	Needle Poition	LEFT-MIDDLE-RIGHT
14	Start/stop button	YES
15	Needle up /down position control button	YES
16	Needle stop position control button	YES
17	Automatic under bed bobbin trimmer	YES
18	LOCK stitch button	YES
19	Reverse Stitch button	YES
20	Pattern Charts at top plate	YES
21	Foot Pedal control	YES
22	Free arm	YES
23	Rotary hook (horizontal)	YES
24	Drop-in Bobbin	YES
25	Bobbin Thread Cut & Quick threading set	YES
26	Bobbin Winding	YES
27	Auto Needle threader	YES
28	Feed dog	YES (7 rows of Teeth)
29	Feed Dog drop system	YES
30	Touchcontrol panel with VATN LCD display	YES
31	Arm space between Needle to edge of cover	12" (300mm) Long
32	Height of Arm space	4.3"(112mm) High
33	Unit dimensions	64x24x31CM
34	Weight gross/net	16.5KG/12.5KG
35	Lamp	6 SMD LED ULTRA LIGHT
36	max speed (rpm)	950±50 rpm
37	minmum speed (rpm)	90±10 rpm
38	Motor	DC 220V
39	Input voltage	AC 220-240VAC/ 70W
40	Acrylic Table extra large (600*450mm)	Optional
41	Straight sritch needle plate	Optional
42	Trolley bag	Optional
43	Accessory stroage	2 PCS
44	Standard Accessories	YES
45	Rigid dustcover with Babylock	Included

# ACCESSORIES

1. Needle Set
2. Bobbin(4)  
(one in machine)
3. Spool Cap(large)
4. Spool Cap(small)
5. Needle Plate Screwdriver
6. Screwdrivers
7. Seam Ripper with Brush
8. Buttonhole Foot
9. Overcasting Foot
10. Zipper Foot
11. Straight Stitch Foot
12. 1/4 Inch Quilting Foot
13. Blind Hem Foot
14. Sew-On Button Foot
15. All Purpose Foot (on machine)
16. Open Toe Foot
17. Darning/Free Motion Quilting Foot
18. Knee Lifter
19. Quilting Guide
20. Extra Spool Pin
21. Spool Pin Felt
22. Foot Control Pedal
23. Dust Cover



# Pattern Chart



201202203 204 205 206 207 208 209 210 211 212 213 214 215 216 217 218 219 220 221 222 223 224 225 226 227 228 229 230 231 232 233 234 235 236 237 238 239 240  
**A B C D E F G H I J K L M N O P Q R S T U V W X Y Z Á Â Ã Ä Å Æ Ç È É Ê Ë Ì Ó Ô Õ Ù Ñ**



241 242 243 244 245 246 247 248 249 250 251 252 253 254 255 256 257 258 259 260 261 262 263 264 265 266 267 268 269 270 271 272 273 274 275 276 277 278 279 280  
**a b c d e f g h i j k l m n o p q r s t u v w x y z á â ã ä å æ ç è é ê ë ì ó ô õ ù ñ**



281 282 283 284 285 286 287 288 289 290 291 292 293 294 295 296 297 298 299 300  
**0 1 2 3 4 5 6 7 8 9 [ ] - . @ ' / ~ ? ! &**

301 302 303 304 305 306 307 308 309 310 311 312 313 314 315 316 317 318 319 320 321 322 323 324 325 326 327 328 329 330 331 332 333 334 335 336 337 338 339 340  
**A B C D E F G H I J K L M N O P Q R S T U V W X Y Z Á Â Ã Ä Å Æ Ç È É Ê Ë Ì Ó Ô Õ Ù Ñ**

341 342 343 344 345 346 347 348 349 350 351 352 353 354 355 356 357 358 359 360 361 362 363 364 365 366 367 368 369 370 371 372 373 374 375 376 377 378 379 380  
**a b c d e f g h i j k l m n o p q r s t u v w x y z á â ã ä å æ ç è é ê ë ì ó ô õ ù ñ**



381 382 383 384 385 386 387 388 389 390 391 392 393 394 395 396 397 398 399 400  
**0 1 2 3 4 5 6 7 8 9 [ ] - . @ ' / ~ ? ! &**

401 402 403 404 405 406 407 408 409 410 411 412 413 414 415 416 417 418 419 420 421 422 423 424 425 426 427 428 429 430 431 432 433 434 435 436 437 438 439 440  
**A B C D E F G H I J K L M N O P Q R S T U V W X Y Z Á Â Ã Ä Å Æ Ç È É Ê Ë Ì Ó Ô Õ Ù Ñ**

441 442 443 444 445 446 447 448 449 450 451 452 453 454 455 456 457 458 459 460 461 462 463 464 465 466 467 468 469 470 471 472 473 474 475 476 477 478 479 480  
**a b c d e f g h i j k l m n o p q r s t u v w x y z á â ã ä å æ ç è é ê ë ì ó ô õ ù ñ**

481 482 483 484 485 486 487 488 489 490 491 492 493 494 495 496 497 498 499 500  
**0 1 2 3 4 5 6 7 8 9 [ ] - . @ ' / ~ ? ! &**